

Technical Data Sheet

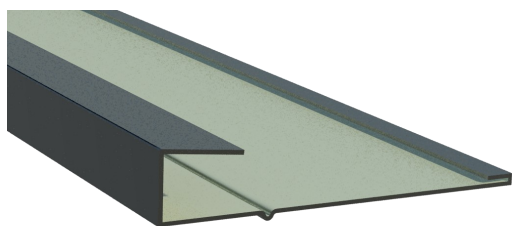
Small Dry Verge Trim for Slate (No 1)

PRODUCT



INSTALLATION

Nail slate trim through flange into batten. Where slate trim intersects at ridge and eaves cut with hand snips (do not cut with ginder). Interlock trims for verges greater than 3m long.



Product Description

Description	Colour	Code
Small Slate Edge No 1	Black, Grey	DVSSL1



2273 - CPR - 0485

USES

- 3m continuous dry verge trim provides a seamless neat dry verge every time
- Suitable for use with any slate roof installation
- Eliminates the need for pointing any gables
- Designed to withstand the harshest climates with a high resistance to corrosion and abrasion and can be installed in any weather conditions

FEATURES & BENEFITS

- Provides full wind uplift and weather protection to the verge of a roof
- Mechanically fixed with no maintenance required
- Quick and easy to install with no special skills or tools required for installation
- Compatible with all slate roofing
- Compatible with all mortar or dry fixed ridge systems
- Available in large or small slate edge trim version
- Meets requirements of BS5534 and ICP2 for mechanical fixing
- UV and heat resistant
- Prevents entry of birds and large insects
- Unaffected by differential movement or settlement
- Tougher than aluminium products, preventing unnecessary damage on site
- Patented 5mm drop on large edge version helps avoid seepage and damage to the roof
- Galvanised steel with polyester or plastisol coating

